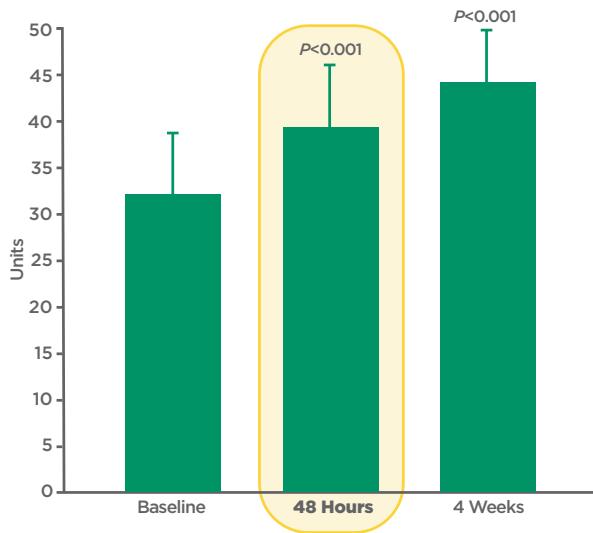


SKIN BARRIER-RESTORING EFFECTS OF A BEESWAX-CONTAINING EMOLLIENT SKIN CREAM¹

STUDY DESIGN: A 4-week, open-label study (N=12) was designed to assess changes in skin viscoelasticity and transepidermal water loss (TEWL) among subjects with eczema following the topical effects of Cūtemol Cream.

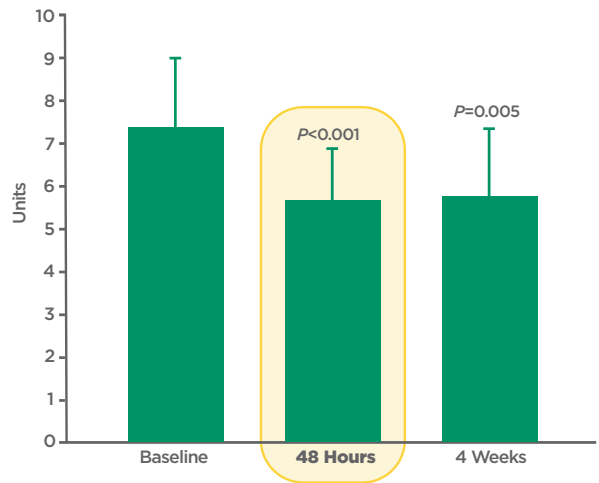
FAST EFFECTIVENESS IN 48 HOURS

CŪTEMOL CREAM *INCREASED* CUTOMETRY (SKIN HYDRATION) MEASURES BY 23% WITHIN 48 HOURS

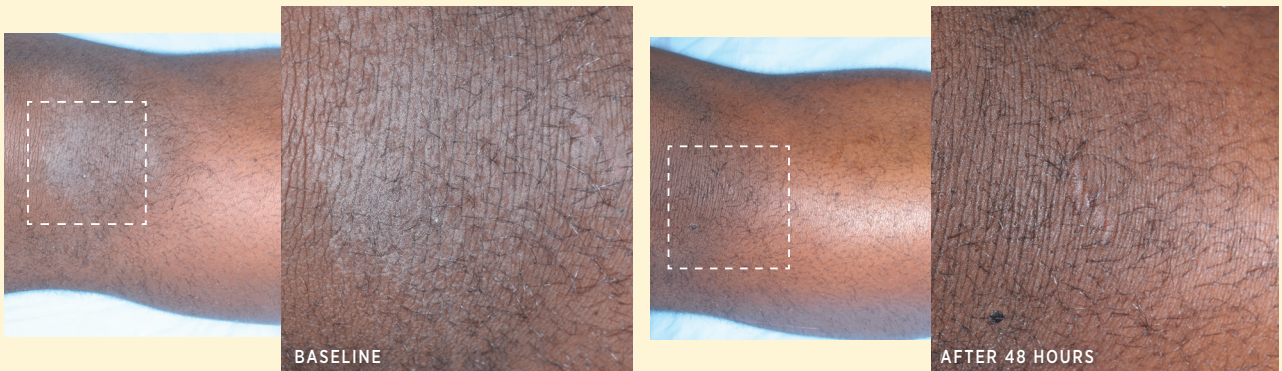


- After 48 hours, Cūtemol Cream increased mean cutometry measures from 32.1 units at baseline to 39.3 units ($P < 0.001$), which was a 23% increase
- Within 1 month, Cūtemol Cream increased mean cutometry measures to 44.4 units ($P < 0.001$), which was a 38% increase

CŪTEMOL CREAM *DECREASED* TEWL BY 23% WITHIN 48 HOURS AND MAINTAINED IT FOR 1 MONTH



- After 48 hours, Cūtemol Cream decreased the TEWL from a baseline of 7.5 g/m²/hr to 5.8 g/m²/hr ($P < 0.001$), which was a 23% decrease
- Within 1 month, Cūtemol Cream decreased the TEWL 5.8 g/m²/hr ($P = 0.005$), which was a 22% decrease



There were no reports of adverse events.

PATIENTS IN THE STELLAR 2 CLINICAL REVIEW HAD **POSITIVE EXPERIENCES WITH CŪTEMOL CREAM IN ONLY 10 DAYS**²

STUDY DESIGN: Participants (N=90) in this study presented with severely dry skin, eczema, or both. They were asked to apply Cūtemol Cream 2 to 3 times daily for 10 days.

STUDY PARTICIPANT **QUESTIONS AND REPLIES**

Overall Feeling

What did you think about this cream? Did it help moisturize, heal, and soothe your skin's problem areas, like dry hands, fingers, or cracked heels?

“My skin felt hydrated almost instantly and my painful, cracking heels were softened and healed within 2-3 days. I'm definitely sold on this product.”

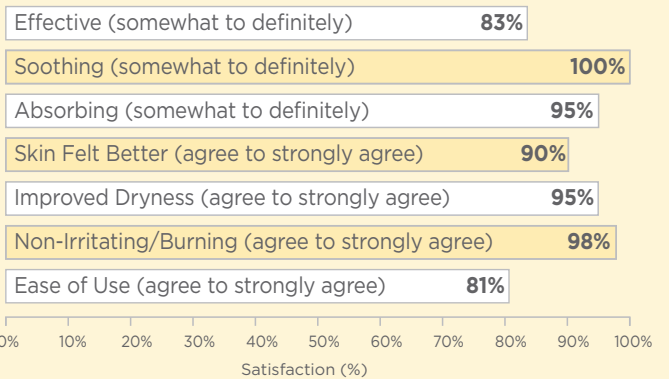
“My hands have taken a beating with all this hand washing due to COVID-19, so I keep this cream close by and apply 2-3 times a day! It's honestly saved my cuticles and knuckles that dry out and crack.”

Use On Body

Did you use this cream multiple times a day on various areas of your body that are dry and cracked?

“It truly gets absorbed into the skin and lasts throughout hand washing, which has always been a concern with trying to treat dry skin/eczema on my hands.”

Overall Satisfaction (agree to strongly agree) **85%**



Results

Would you recommend this cream to others with severely dry skin?

“Wow! This cream is life changing, and I don't see how I can ever use any other product again!”

“Anyone looking for a product that actually works at an amazing price point, this is for you! 100% recommend.”



BASELINE



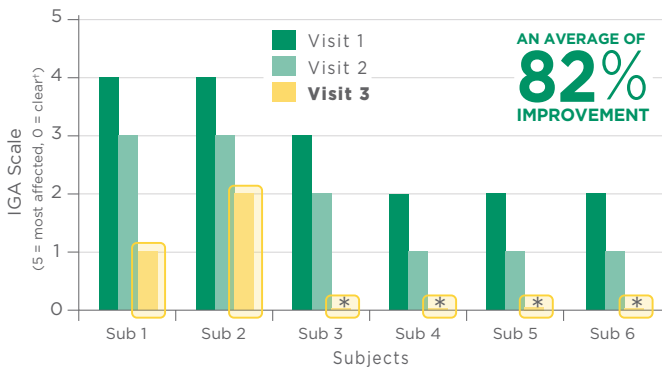
AFTER 10 DAYS

3

CŪTEMOL CREAM IN THE TREATMENT OF MODERATE-TO-SEVERE ATOPIC DEMATITIS¹

STUDY DESIGN: This was a 60-day trial of patients who presented with atopic dermatitis. These patients experienced moderate-to-severely cracked skin on the palms of their hands and the soles of their feet.

PATIENTS DEMONSTRATED AN 82% IMPROVEMENT WITH CŪTEMOL CREAM*



*These subjects were clear on Visit 3.



4

PATIENTS IN THE STELLAR 1 CLINICAL REVIEW EXPERIENCED EXCELLENT RESULTS WITH CŪTEMOL SENSITIVE CREAM³

STUDY DESIGN: Participants (N=94) in this study were asked to rate the product effectiveness of Cūtemol Sensitive over a period of 10 days.

Skin feels better	★★★★★	4.7/5
Improved dryness	★★★★★	4.5/5
No irritation or burning	★★★★★	5/5
Skin looks less red and dry	★★★★★	4.8/5
Easy to use	★★★★★	4/5
Overall satisfaction	★★★★★	5/5



EXPECT EFFICACY AND EASY ACCESS

- 💧 Cūtemol Cream works like an ointment, feels like a cream
- 💧 Use Cūtemol Cream on cracked and fissured skin on hands, fingers, and feet
- 💧 Cūtemol Cream has been recommended by dermatologists for over 20 years
- 💧 Patients can receive Cūtemol Cream in the office, at Sumlab.com, or through contracted specialty pharmacies
- 💧 Patients pay the same price for Cūtemol Cream, no matter where they purchase it

References: 1. Data on file. Summers Laboratories, Inc. 2. *STELLAR Summers Labs Program Report*. April 2021. 2021_Stellar Cutemol Program Report.pdf. 3. *STELLAR Summers Labs Program Report*. September 2020. 2020_Stellar Cutemol Sensitive Report.pdf.